
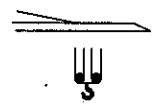


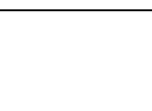

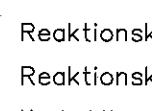

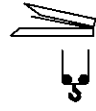
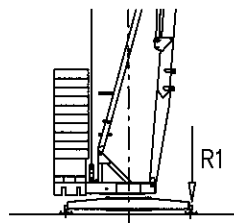


GRU A MONTAGGIO RAPIDO
 GRUE A MONTAGE RAPIDE
 GRUA DE RAPIDO MONTAJE
 GRUA DE MONTAGEM RAPIDA
 QUICK SELFERECTING CRANE
 HYDRAULISCHER SCHNELLMONTAGEKRAN

Curve di carico – Courbes de charges – Load diagrams – LastKurven – Curvas de cargas

	3	25	29	m	OP	3	25	29	m				
	800	800	800	kg		1000	1000	1000	kg				
	3	10	12	14	16	18	20	22	24	26	28	30	m
	4000	4000	3160	2600	2200	1900	1670	1480	1320	1200	1090	1000	kg
	3	10.8	12	14	16	18	20	22	24	25	m		
	4000	4000	3480	2870	2430	2100	1840	1640	1470	1400	kg		
	3	17.6	18	20	22	24	26	28	30	m			
	2000	2000	1950	1720	1530	1380	1250	1140	1050	kg			
	3	19.1	20	22	24	25	m						
	2000	2000	1890	1690	1520	1450	kg						
	3	15	16	18	20	22	24	26	28	30	m		
	2500	2500	2300	1950	1720	1530	1380	1250	1140	1050	kg		
	3	15	19.1	20	22	24	25	m					
	2500	2500	2000	1890	1690	1520	1450	kg					
	3	10	14	m		3	14	m					
	4000	4000	2600	kg		2000	2000	kg					

Reazioni – Reactions – Réactions – Eckdrücke – Reacciones

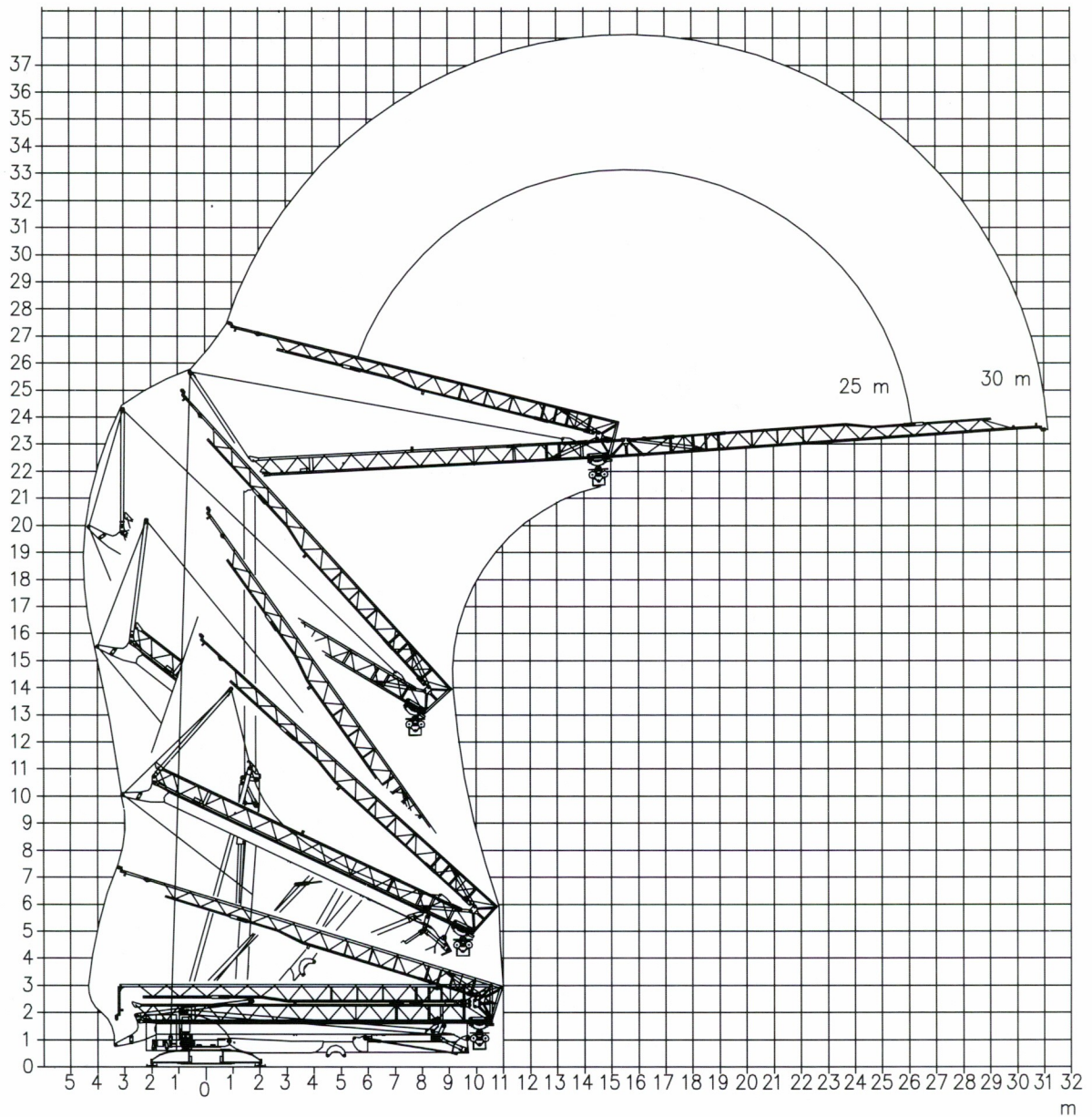


R1 ● 20 t ■ 11.5 t

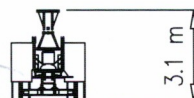
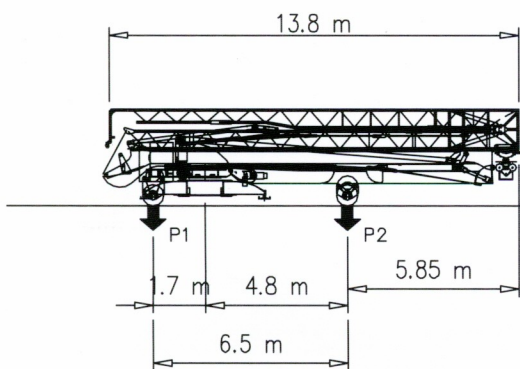
▲ 10.5 t ○ 22.5 t

- | | | |
|-------------------------------|---------------------------------------|--------------------------------------|
| ● Reazioni in servizio | ● Reactions in service | ● Réactions en service |
| ■ Reazioni fuori servizio | ■ Reactions out of service | ■ Réactions hors service |
| ▲ Peso della gru senza assali | ▲ Dead weight without transport axles | ▲ Poids de construction sans essieux |
| ○ Peso zavorra rotante | ○ Ballast weight | ○ Poids du lest |
-
- | | | |
|--|--|---|
| ● Reaktionskräfte in betrieb | ● Reacciones en servicio | ● Em serviço |
| ■ Reaktionskräfte außer betrieb | ■ Reacciones fuera de servicio | ■ Fora de serviço |
| ▲ Konstruktionsgewicht ohne transportachse | ▲ Peso de la grua sin tren de transporte | ▲ Peso de la grua sem carro de transporte |
| ○ Ballastgewicht | ○ Peso de lastre | ○ Peso de lastre rotativo |

Montaggio – Montage – Erection – Montage – Montaje



Trasporto – Transport – Transport – Transport – Transporte

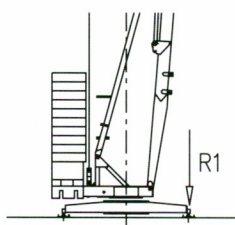


P1	Kg	7000
P2	Kg	10000
Ptot	Kg	17000

Curve di carico – Courbes de charges – Load diagrams – LastKurven – Curvas de cargas

	3 25 29	m	OP	3 25 29	m							
	800 800 800	kg		1000 1000 1000	kg							
	3 10 12 14 16 18 20 22 24 26 28 30	m										
	4000 4000 3160 2600 2200 1900 1670 1480 1320 1200 1090 1000	kg										
	3 10.8 12 14 16 18 20 22 24 25	m										
	4000 4000 3480 2870 2430 2100 1840 1640 1470 1400	kg										
	3 17.6 18 20 22 24 26 28 30	m										
	2000 2000 1950 1720 1530 1380 1250 1140 1050	kg										
	3 19.1 20 22 24 25	m										
	2000 2000 1890 1690 1520 1450	kg										
	3 15 16 18 20 22 24 26 28 30	m										
	2500 2500 2300 1950 1720 1530 1380 1250 1140 1050	kg										
	3 15 19.1 20 22 24 25	m										
	2500 2500 2000 1890 1690 1520 1450	kg										
	3 10 14	m		3 14	m							
	4000 4000 2600	kg		2000 2000	kg							

Reazioni – Reactions – Réactions – Eckdrücke – Reacciones



R1 ● 20 t ■ 11.5 t

▲ 10.5 t ○ 22.5 t

- | | | |
|-------------------------------|---------------------------------------|--------------------------------------|
| ● Reazioni in servizio | ● Reactions in service | ● Réactions en service |
| ■ Reazioni fuori servizio | ■ Reactions out of service | ■ Réactions hors service |
| ▲ Peso della gru senza assali | ▲ Dead weight without transport axles | ▲ Poids de construction sans essieux |
| ○ Peso zavorra rotante | ○ Ballast weight | ○ Poids du lest |
-
- | | | |
|--|--|---|
| ● Reaktionskräfte in betrieb | ● Reacciones en servicio | ● Em serviço |
| ■ Reaktionskräfte außer betrieb | ■ Reacciones fuera de servicio | ■ Fora de serviço |
| ▲ Konstruktionsgewicht ohne transportachse | ▲ Peso de la grua sin tren de transporte | ▲ Peso de la grua sem carro de transporte |
| ○ Ballastgewicht | ○ Peso de lastre | ○ Peso de lastre rotativo |